

# ***What is the Dalry Neighbourhood?***

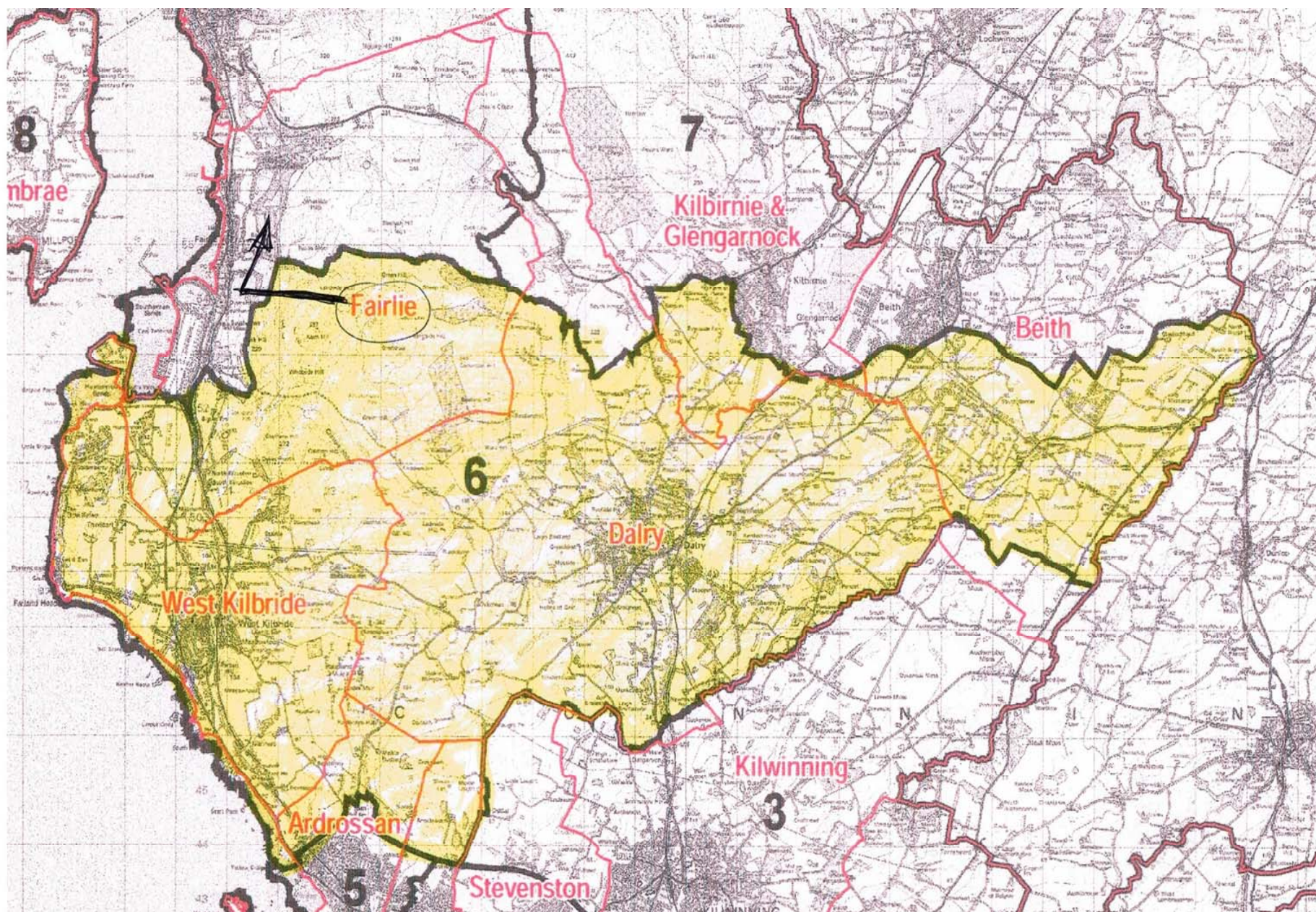


# ***Your Neighbourhood could be any one, or a combination of the following:***

- Your Electoral Ward boundaries?
- Your Post Code boundaries?
- Your Civil Parish boundaries?
- Your Fire, Police, Health, Social Work and Education boundaries?
- Your Community Council boundaries?
- The boundaries used by Scottish Government for the reporting of statistics?
- ***Being part of a community that historically you and past generations have considered to be Dalry?***
- The boundaries, defined from demographic area statistics, currently being proposed for the Neighbourhood Planning definition of our Community?

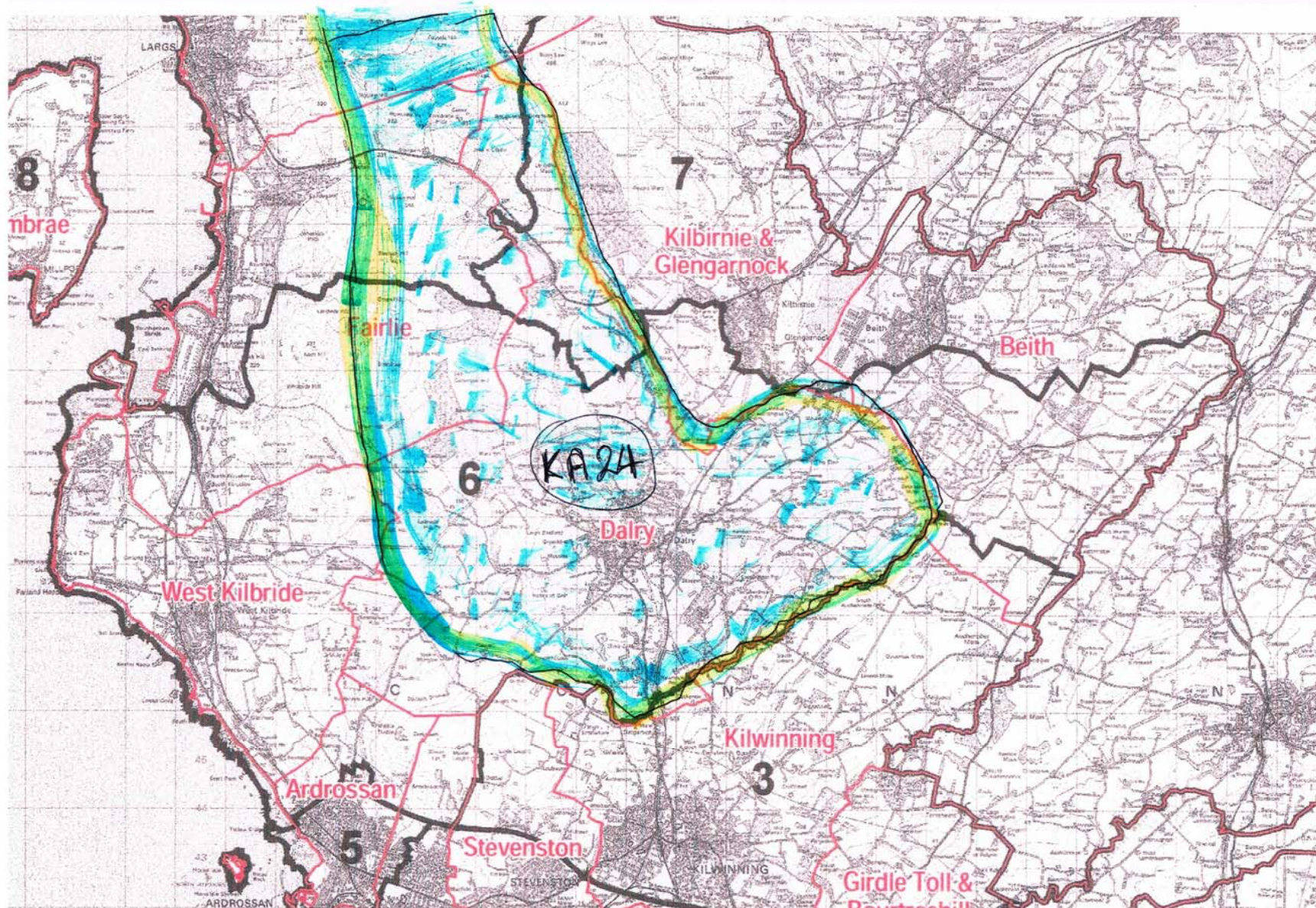


## Ward 6 – West Kilbride & Dalry



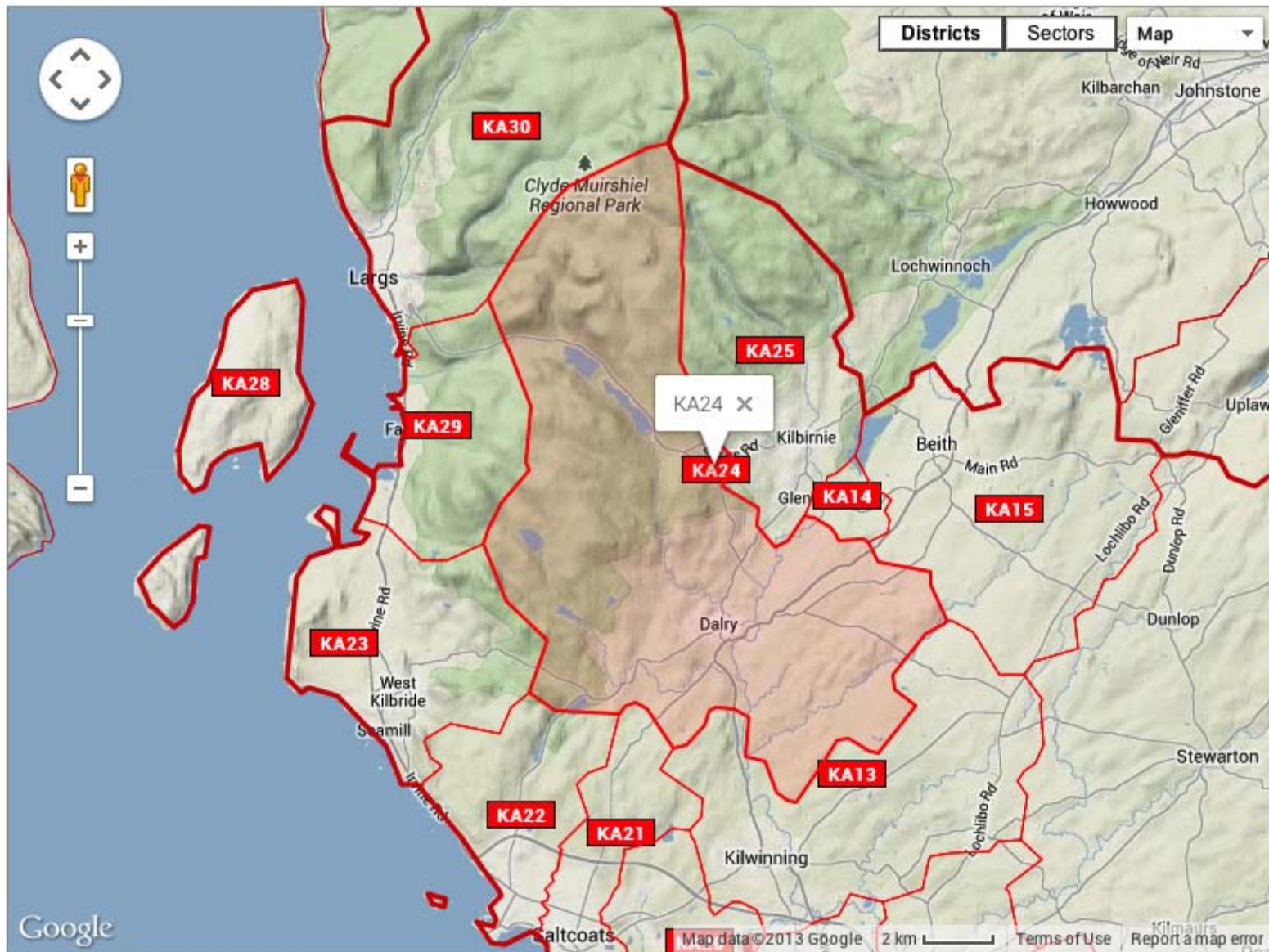


# KA 24 Post Code Boundaries





# KA 24 Post Code Boundaries





# ***Dalry Civil Parish Boundaries***

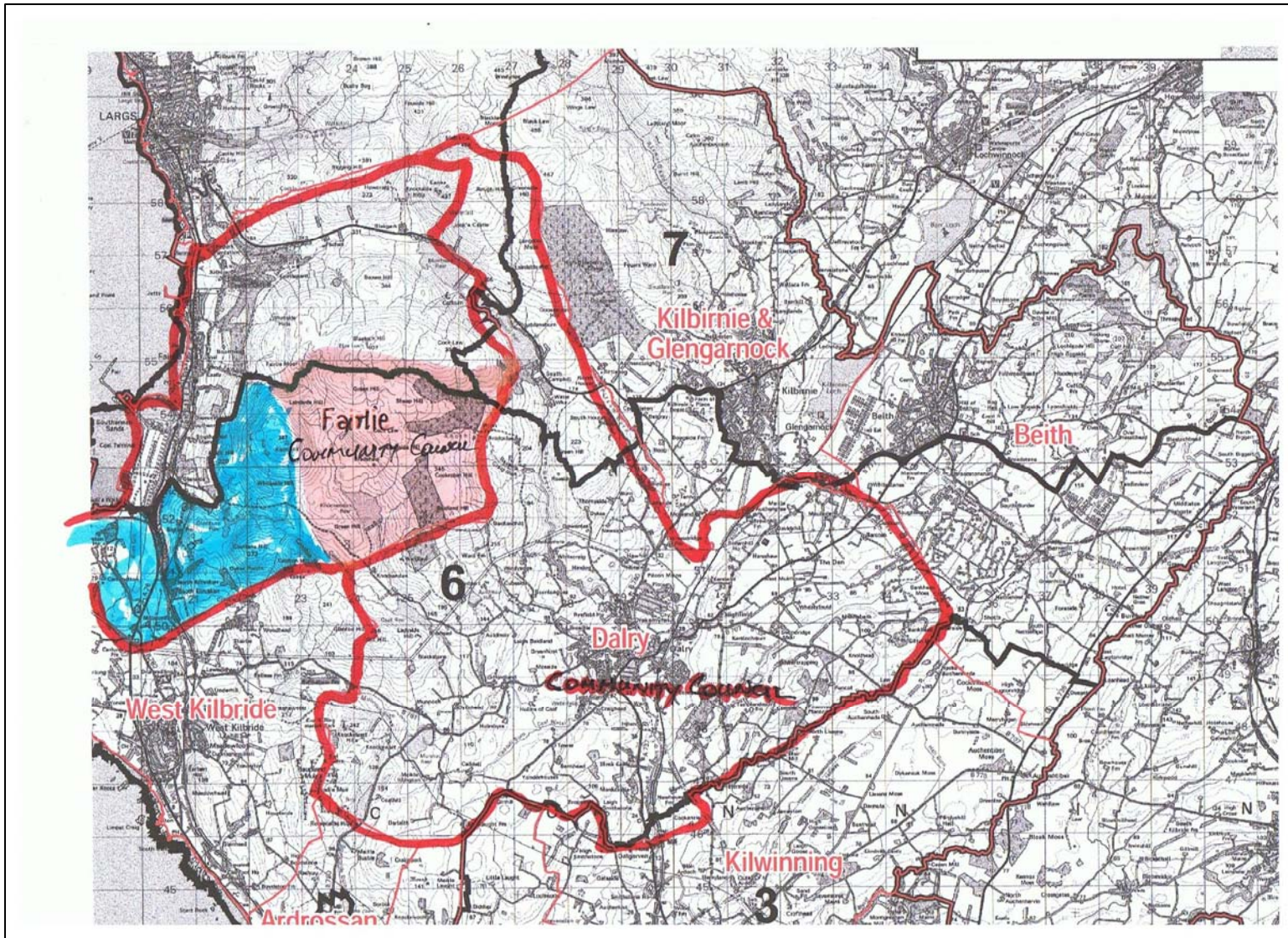


***Your Current Fire, Police, Health,  
Social Work and Education  
boundaries?***

***POST CODE?***



# Current Community Council Boundaries





***The boundaries used by Scottish Government  
for the reporting of population and age  
statistics?***

***POST CODE?***



**NAC BRIEFING NOTE – “NEIGHBOURHOOD PLANNING APPROACH” January 9, 2015 - extract**

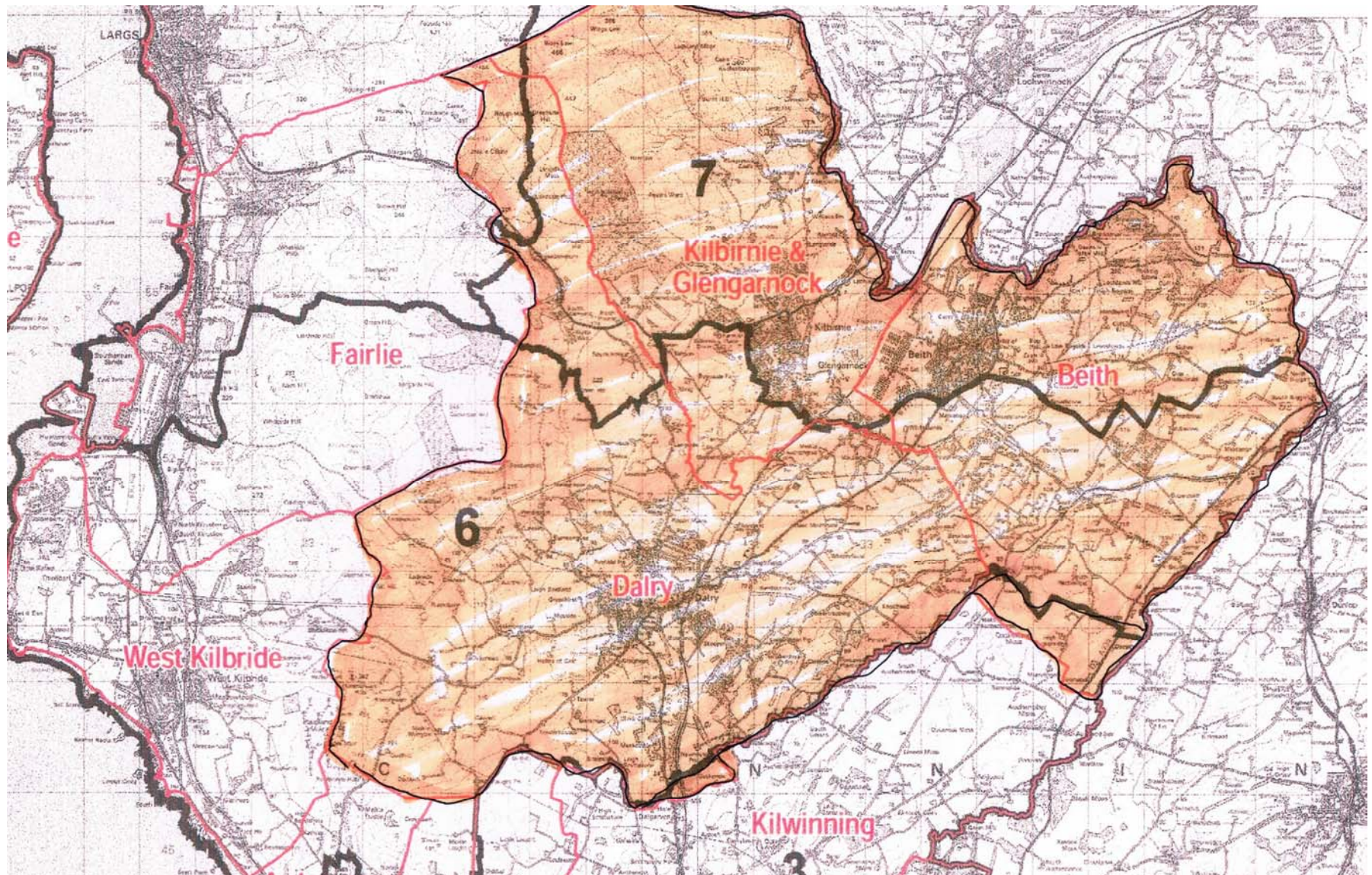
- **New Boundaries** - Options for establishing new Neighbourhood Planning boundaries based on the most robust criteria, presented to CPP Board with six neighbourhood boundaries approved (2012). These were *Arran; Irvine; Kilwinning; Three Towns; Garnock Valley; North Coast, West Kilbride & Cumbrae*.
- First series of six **Neighbourhood Planning Forums** organised and delivered Winter 2013/14. Over 24 speakers & up to 200 delegates including key CPP Partners, elected members, community council chairs, representatives of local associations and schools attended venues across each of the six neighbourhoods.
- Series of **pre-engagement workshops** held with elected members, CPP Board members and the Community Engagement Reference Group on Neighbourhood Planning issues providing a mandate for further consultation (Nov 2014).

*With three pre-engagement discussions completed with stakeholder groups, six evening workshops at local venues were then held across the neighbourhoods during February/March 2015. These were facilitated by senior staff in Connected Communities with the aim to explore wider issues and opportunities with the NP approach.*

***I would suggest, from the content of the briefing note, that neighbourhood boundaries have already been decided, and may not form part of any ongoing consultation process.***



# ***Your Neighbourhood – Garnock Valley***





## ***Actions already addressed by DCDH regarding boundary proposals***

- Detailed concerns raised in response to the July 2013 NAC Consultation Questionnaire.
- Concerns raised by the community of Dalry at the NAC meeting of February 2014.
- Letter from DCDH raising concerns about the proposed option 3 Neighbourhood boundaries.
- Individual initiatives by local councillors and other Dalry groups, to make NAC aware of the potential flaws in the option 3 proposals.
- Concerns again raised by DCDH at the NAC 24<sup>th</sup> March 2015 Engagement Workshop.

*Are you concerned,  
or just confused?*

***What should Dalry do now?***